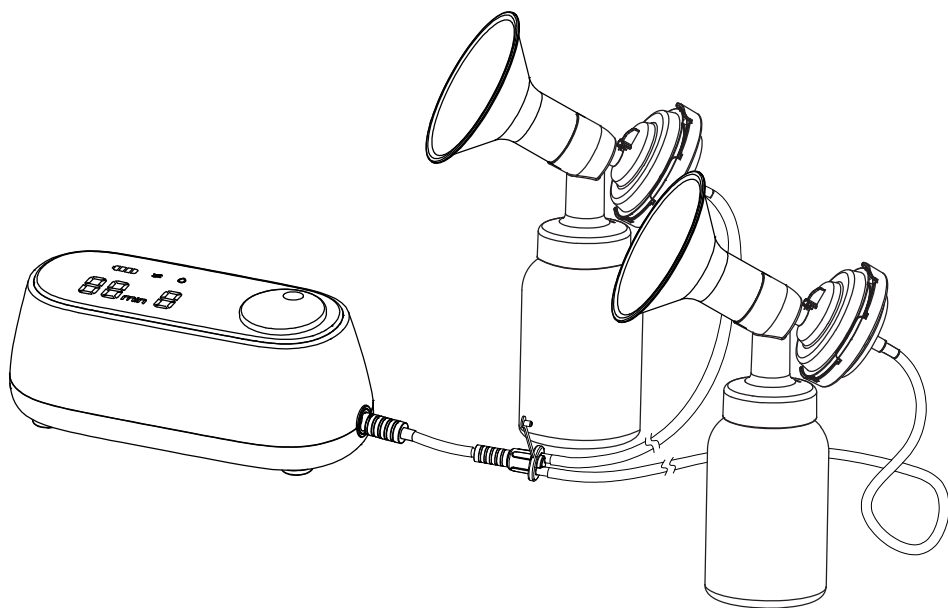


# Lacté

The Milk Masters

## AMY PLUS RECHARGEABLE BREASTPUMP





# CONGRATULATIONS!

Thank you for choosing Lacte Amy Plus Rechargeable Breastpump. It has been known that breastmilk is the best natural food for your baby. With our collaboration with the breastfeeding experts and research with the lovely breastfeeding mothers who are determined to give the best to their babies, just like you, Lacte fulfills the breastfeeding mothers' needs where the circumstances do not make breastfeeding possible. Milking made easy.

## **Lacté Amy Plus Rechargeable Breastpump – Unrivalled features at its price point**

- Rechargeable Battery
- Closed System with Anti-backflow
- Breastshield Funnel Size: 24mm  
Optional Sizes: 21mm, 27mm, 30mm, 36mm
- 2-Phase Expression
  - 9 levels of Stimulation
  - 9 levels of Expression
- Memory Function to Remember the Last Setting.
- Knob Full Control.
- Light & Compact for Maximum Portability.

## **Intended Use**

Lacté Amy Plus Rechargeable Breastpump is used to express milk from the breasts of lactating women. The breastpump may be used to relieve engorgement, a painful condition whereby the breasts are overfull, possibly preventing a proper latch by the infant. A Breastpump may also be used in the event if an infant does not latch properly for direct breastfeeding and the mother still desires the benefits of breast milk.



# TABLE OF CONTENTS

Congratulations	i
Intended Use	i
Important Safety Information	1
Product Description	2
Preparing the Pump	3-4
Expression	4-5
Storing and thawing Breastmilk	6
Cleaning	7
Troubleshooting	8
Technical Data	8
Warranty	9

# IMPORTANT SAFETY INFORMATION

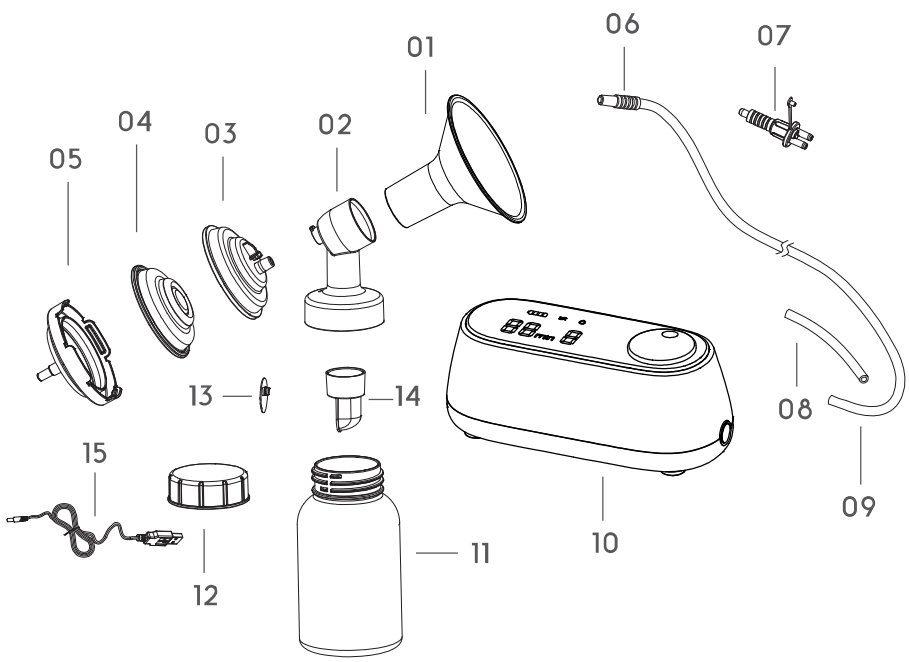
**Failure to follow these instructions/ safety information can lead to danger from the device.**

- Unplug the AC adapter from wall socket outlet when the pump is not in use.
- Do not leave the Breastpump unattended when plugged into a power source.
- Keep the device dry and do not immerse in water.
- Do not reach for an electrical device If It has fallen into water. Unplug immediately.
- Repairs must be conducted by authorised service agencies.

## **Warning**

- This is a single user product. Use by more than one person may present a health risk.
- Supervision is required when the breastpump is used in the vicinity of children.
- Use the breastpump only for its intended use as described in this manual.
- Do not use the breastpump while sleeping or overly drowsy.
- Do not operate the breastpump if it is physically damaged or abused.
- Do not place the breastpump near any appliances generating a strong magnetic field.
- Do not place the breastpump under direct sunlight.

# PRODUCT DESCRIPTION



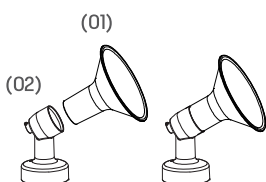
01	24mm Breast Shield	x2	09	Split Tube	x2
02	Bottle Connector	x2	10	Pump Unit	x1
03	Barrier Front Housing	x2	11	Standard Neck Bottle	x2
04	Diaphragm	x2	12	Bottle Lid	x2
05	Barrier Back Housing	x2	13	Membrane	x2
06	Tube Connector	x2	14	Valve	x2
07	Y Connector	x1	15	USB Cable	x1
08	Main Tube	x1			

# PREPARING THE PUMP

## Warning

Lacté Amy Plus Rechargeable Breastpump comes pre-assembled, however you need to re-assemble it after each cleaning. Before assembling, the parts which come in contact with breast milk directly, such as milk bottle, breast shield, bottle connector, diaphragm, membrane, valve, bottle lid must be cleaned and sterilized before each use.

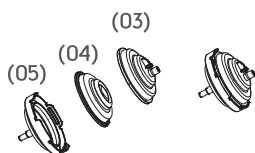
01



### Assembling the Breast Shield

Insert the breast shield (01) to the bottle connector, make sure the two parts are connected airtight.

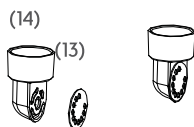
02



### Assembling the Anti Backflow Barrier

Insert the breast shield (01) to the bottle connector, make sure the two parts are connected airtight.

03



### Assembling the Valve & Membrane

Insert Membrand (14) into the tiny slot of the Valve (13), make sure they're fastened well.

04



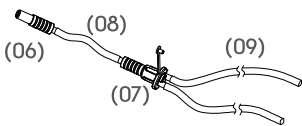
### Assembling Suction Kit.

Mount the Valve SECURELY unto the bottom part of the breast shield, insert barrier to the bottle connector and buckle up tightly. Screw the opening of the bottle (11) to the become a complete Suction Kit.

4

# PREPARING THE PUMP

05

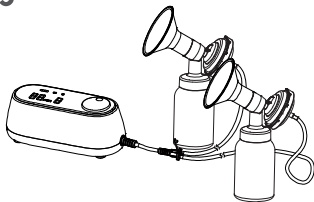


## Assembling Tube Set.

Attach two Tube Connectors (06) to each end of the Main Tube (08), then connect one end to the single opening of the Y-Connector (07). Attach one end of the Split Tube (09) to the Y-Connector as illustrated.

NOTE: Remove one of the Split Tube (09) and insert the plug to become single pumping.

05

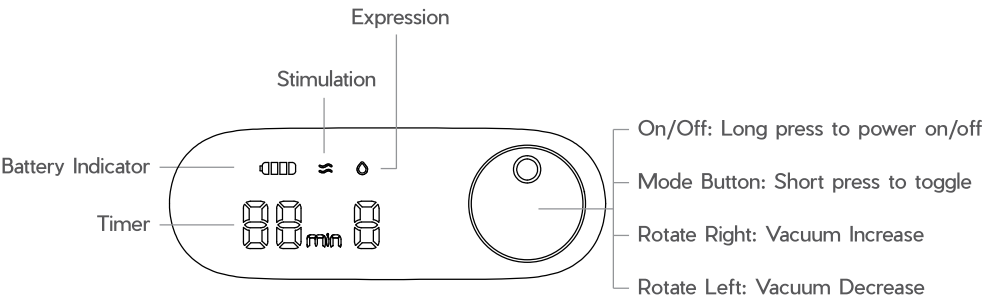


## Connecting to the Pump Unit

Connect one end of the Tube Connector (06) to the pump end. Insert 2 Split Tubes (09) to the Y-Connector as illustrated.

# EXPRESSION

## Control Panel Description



- Place the breast shield on your breast so that your nipple is properly centered in the tunnel.
- First Use: Long Press the knob to switch on the breast pump. The 30 minutes timer starts counting and the pump begins its default setting under Stimulation Phase at Suction Level 1, then by either manually switch or 2Mins Auto-Switch, it toggles to Expression Phase at Suction Level 1. After that, it memorizes and each toggling it returns back to the last setting.
- After First Use: the pump always starts with the last setting under Stimulation Phase after each turn-on to avoid potential hurt to the moms by a sudden increase of vacuum. The 1st 2Mins Auto-Switch starts counting, it automatically switches to Expression Phase with the last setting when 2Mins counting completes. However, if you would like to stay longer with Stimulation Phase and manually switch back to it, the 2Mins Auto-Switch starts counting again and the toggling to Expression happens again when the 2nd 2Mins counting is done. If toggling back to Stimulation Phase again, 2Mins Auto-Switch voids and the pump will stay as it is until any further operation is done.
- Short presse the Knob to manually toggle between modes. The pump memorized the last setting under each mode.
- Rotate the Knob to the right to increase / to the left to decrease the strength under each phase to find your maximum comfortable strength.  
Maximum Comfortable Strength: Rotate the Knob to the right to increase the strength until it is slightly uncomfortable, then rotate to the left to reduce minimally.
- Please fully charge the lithium-ion battery at least 4 hours especially before first use. The pump continues working up to 4cycles after each fully charged.

The built-in battery is not removeable. Connect the pump unit to AC adaptor to charge. Use ONLY 5V power adaptor to charge.



- Place the breast shield on your breast so that your nipple is properly centered in the tunnel.
- **First Use:** Long Press the knob to switch on the breast pump. The 30 minutes timer starts counting and the pump begins its default setting under Stimulation Phase at Suction Level 1, then by either manually switch or 2Mins Auto-Switch, it toggles to Expression Phase at Suction Level 1. After that, it memorizes and each toggling it returns back to the last setting.
- **After First Use:** the pump always starts with the last setting under Stimulation Phase after each turn-on to avoid potential hurt to the moms by a sudden increase of vacuum. The 1st 2Mins Auto-Switch starts counting, it automatically switches to Expression Phase with the last setting when 2Mins counting completes. However, if you would like to stay longer with Stimulation Phase and manually switch back to it, the 2Mins Auto-Switch starts counting again and the toggling to Expression happens again when the 2nd 2Mins counting is done. If toggling back to Stimulation Phase again, 2Mins Auto-Switch voids and the pump will stay as it is until any further operation is done.
- Short presse the Knob to manually toggle between modes. The pump memorized the last setting under each mode.
- Rotate the Knob to the right to increase / to the left to decrease the strength under each phase to find your maximum comfortable strength.  
Maximum Comfrotable Strength: Rotate the Knob to the right to increase the strength until it is slightly uncomfortable, then rotate to the left to reduce minimally.
- Please fully charge the lithium-ion battery at least 4 hours especially before first use. The pump continues working up to 4cycles after each fully charged.

The built-in battery is not removeable. Connect the pump unit to AC adaptor to charge. Use **ONLY** 5V power adaptor to charge.

Before using your Lacté Breastpump, disassemble, wash and sterilise all parts of the breastshield kit.

- Do NOT sterilise tubing.
- Completely air-dry or towel-dry before assembly for next use.

Partially dry components may affect the operation of your Electric Breastpump. Please ensure that all parts are completely dry before use.

### **Before Each Use:**

- Wash your hands thoroughly with soap and warm water before handling the Breastshield Kit, the Electric Breastpump or any other attachments.
- Make sure the Breastshield Kit is cleaned, sterilised and dried.
- Ensure the tubing is free from any liquid. Do NOT operate your Lacté Breastpump if any liquid is visible in the tubing. (See Tubing Cleaning Instructions on page 7.)

### **General Cleaning Instruction:**

- Set aside the tubing. Under the normal working conditions of the pump, the diaphragm would prevent the back-flow of milk. Therefore, these items do not need to be washed. In case of finding any liquid or liquid vapour inside the tubing, follow the Tubing Cleaning Instruction carefully before use.
- All parts of the Breastshield Kit may be cleaned in the upper compartment of your dishwasher or hand washed with dish soap in hot water. Do NOT use solvents or abrasives.
- Rinse with hot, clean water.
- To clean the Pump Base, wipe the Base with a damp cloth, using only water or water mixed with a mild soap

### **Tubing Cleaning Instructions:**

- Wipe the outside of the tubing with a clean, damp cloth. Avoid getting water or other fluids inside the tubing.
- If liquids are found inside tubing, rinse the tubing with clean hat water. Hang to AIR DRY COMPLETELY BEFORE USING. Do NOT insert any object into tubing.

Note: Before each use, visually inspect the individual components for cracks, chips, tears, discoloration or deterioration; as they may affect the efficiency of the Lacté Breastpump. In the event that damage to the device is observed, please discontinue use until the parts have been replaced.

# TROUBLESHOOTING

## If there is low or no suction

- Check all connections if they are all properly attached at all connection points.
- Check the valve membrane if it is seated securely and flat on the valve body.
- Hold the breastshield, not the connector or bottle, while expressing.
- Ensure the breastshield forms a complete seal around the breast.
- There should not be any water in the tubing.
- All components must be completely dry.

## The pump becomes wet

- Unplug from the socket.
- Switch off the pump.
- Do not place the pump upside down. Control panel must point upwards.
- Store the pump in a dry, warm place for 24 hours.

### Note:

- Do not expose the pump to direct sunlight.
- Do not accelerate the drying process by use of heat.

## The pump does not switch on:

Check if the pump is properly charged.

Contact your Lacté dealer or the store where you bought the pump.

# TECHNICAL DATA

- |                              |  |
|------------------------------|--|
| • Model:                     | EDP02                                      |
| • Battery:                   | Li-ion 3.7 ~1750mAh                        |
| Power Input:                 | AC 100-240-50/60Hz                         |
| Power Output:                | DC 5V / 1A                                 |
| • Power Rating:              | 5W   |
| • Stimulation Speed:         | 82-100T/Min                                |
| • Stimulation Vacuum:        | 9 Levels Vacuum                            |
|                              | Max. Single -0.017 Mpa, Double -0.012 Mpa, |
| • Expression Speed:          | 27-50T/Min                                 |
| • Expression Vacuum:         | 9 Levels Vacuum                            |
|                              | Max. Single -0.033Mpa, Double -0.028 Mpa,  |
| • Timer:                     | 30 Minutes                                 |
| • Overall Noise:             | 50dB(A)                                    |
| • Operating Conditions:      | -5~40℃, RH 90%                             |
| • Electric Shock Protection: | Host Machine Class II                      |

Lacté Amy Plus Rechargeable Breastpump ("Product") is warranted to the original user - whether institutional or individual ("First User") - ONLY. From the date of the First User's purchase of the product, GMTA Asia Sdn. Bhd. ("GMTA") warrants the Product to the First User against defects in material or workmanship for a period of one year for the pump mechanism

GMTA sole obligation under this limited warranty shall be to repair or replace, at GMTA option, any Product that is determined to be defective by GMTA and determined to be covered by this express limited warranty. Repair or replacement under this limited warranty is the sole and exclusive remedy of the First User. Proof of purchase in the form of receipted invoice or bill of sale evidencing that the Product is within the warranty period must be presented to obtain warranty service. This limited warranty is extended by GMTA ONLY to the First User and is not assignable or transferable.

EXCEPT TO THE EXTENT PROHIBITED BY APPLICABLE LAW, ANY IMPLIED WARRANTY OF MERCHANTABILITY OR FITNESS FOR A PARTICULAR PURPOSE ON THE PRODUCT IS HEREBY DISCLAIMED. GMTA SHALL NOT BE LIABLE FOR ANY INCIDENTAL, CONSEQUENTIAL, SPECIAL OR PUNITIVE DAMAGES OF ANY KIND FOR BREACH OF THE EXPRESS LIMITED WARRANTY ON THE PRODUCT OR ANY WARRANTY IMPLIED BY OPERATION OF LAW. OTHER THAN THE LIMITED WARRANTY SET FORTH ABOVE, THERE ARE NO OTHER WARRANTIES THAT ACCOMPANY THIS PRODUCT AND ANY ORAL, WRITTEN OR ANY OTHER REPRESENTATION OF ANY KIND IS HEREBY DISCLAIMED.

### **Non-Applicable of Warranty**

In addition to any other limitations on the warranty mentioned above, the warranty shall expire and be of no force or effect upon the occurrence of any of the following:

- (i) the cause of damage of the Product is due to improper handling or use.
- (ii) the Product is not properly maintained by the First User as determined by GMTA.
- (iii) not approved accessories or spare parts are used with the Product as determined by GMTA.

If any of the above occurs, GMTA shall not be responsible for damage to the Product, parts thereof or Injuries arising therefrom, either directly or indirectly. The warranty terms set forth above replaces all prior warranties with respect to the purchased Product, whether in writing or otherwise. Call your local distributor or location where you purchased the Product.